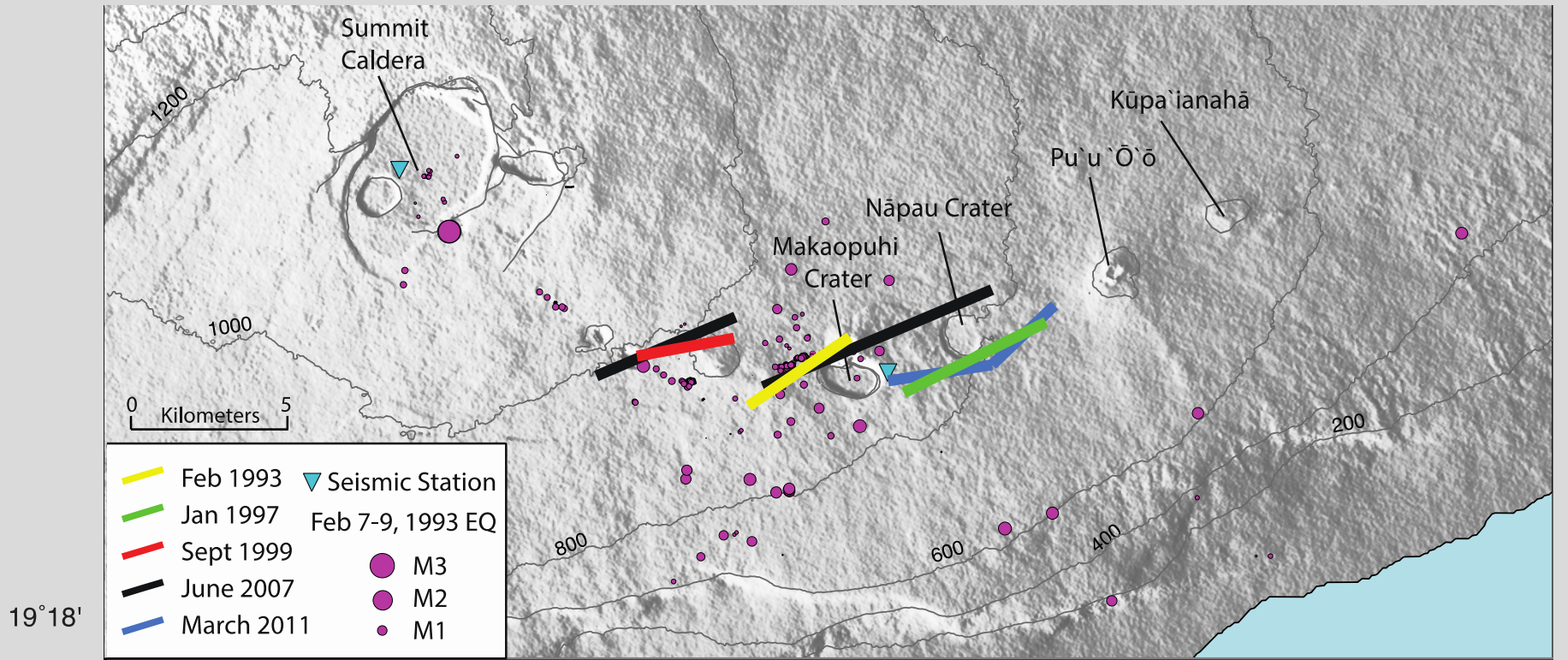


# Characterizing the 1993 Dike Intrusion at Kilauea Volcano, Hawaii

## Modeled Dikes from Kilauea's East Rift Zone (ERZ)



PENNSTATE.



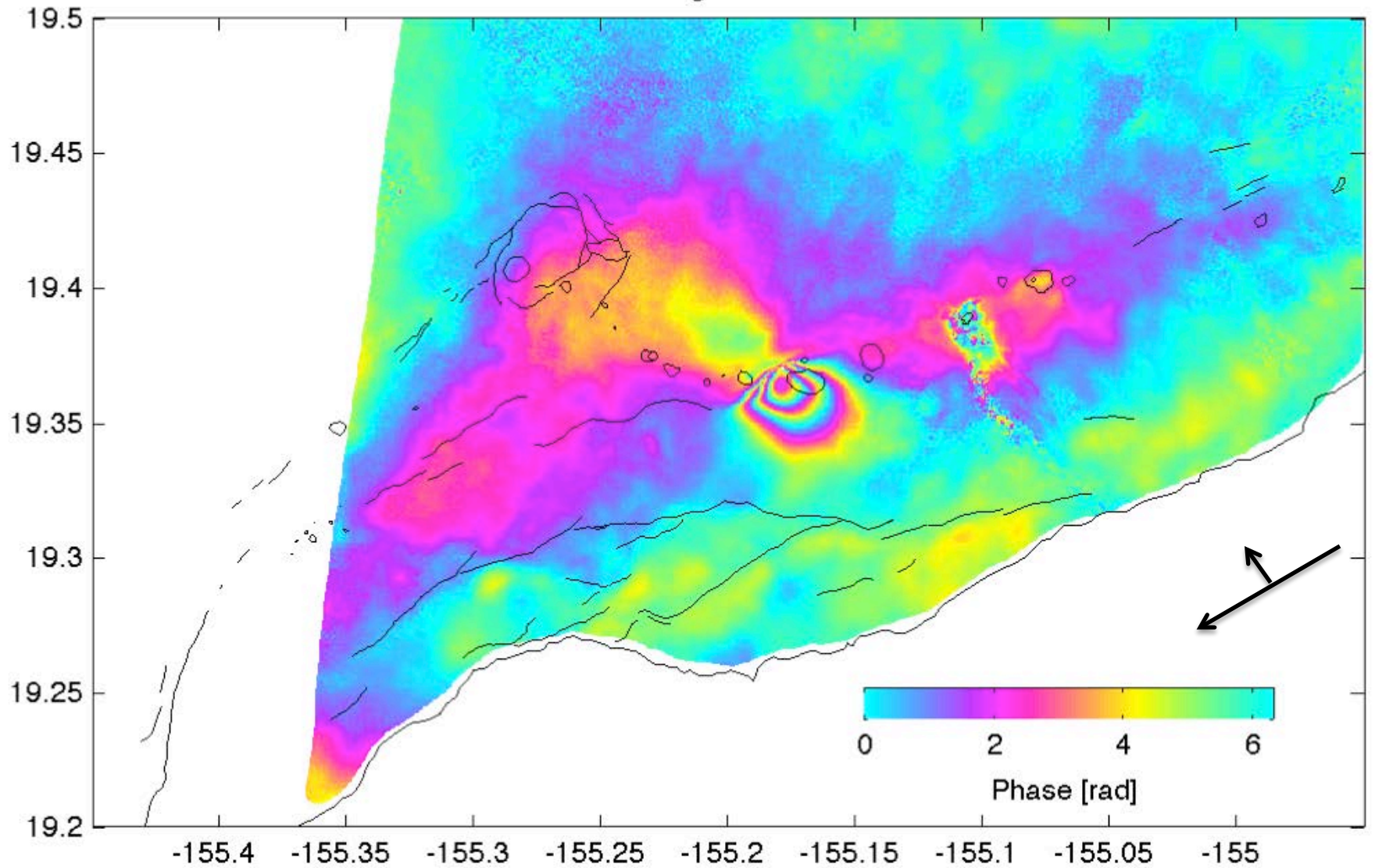
**USGS**  
science for a changing world



TOHOKU  
UNIVERSITY

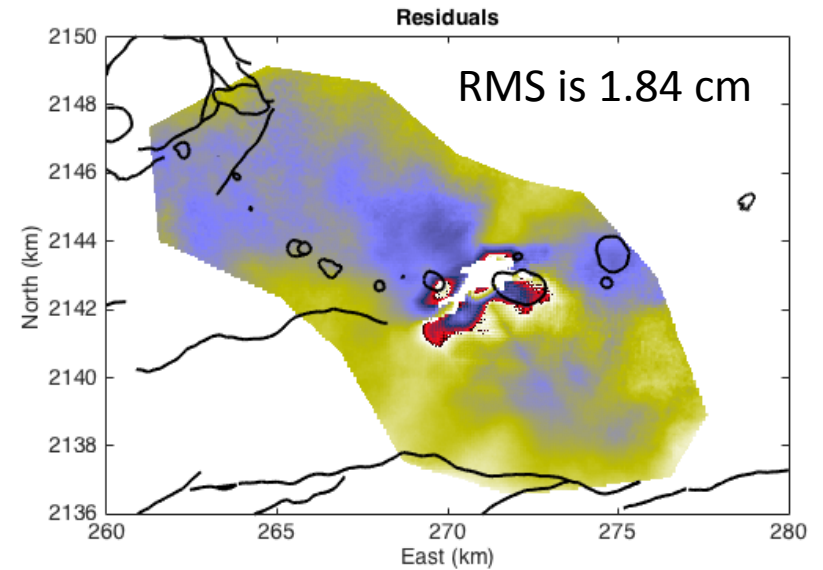
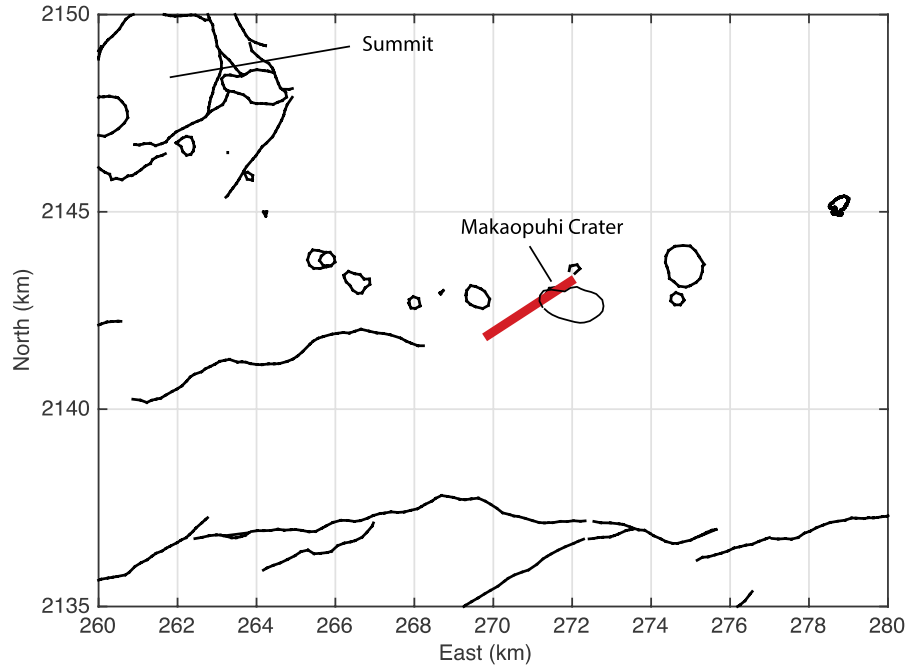
Sarah Moore (Penn State)

# JERS-1 Descending Interferogram [Oct 92 – March 93]



Sarah Moore (Penn State)

# Monte Carlo Inversion and 3D-MBEM Modeling



## Conclusions:

Intrusions lacking summit inflation  
– Decrease of the rift zone perpendicular normal stress due to flank motion [Poland et al, 2014;  
– Due to partial contribution from the Pu'u'Ō'ō reservoir to the intrusion.

## Future Work!

