

*U.S.*  
*Extended Continental Shelf* **Project**



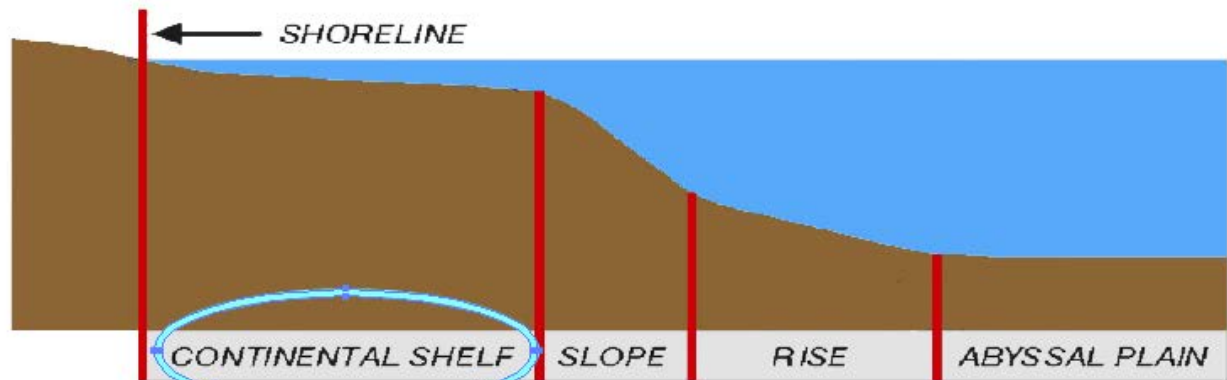
# US Extended Continental Shelf Project

\*USGS Law of the Sea project is a part of this interagency effort, under the guidance of the **ECS Task Force** (13 agencies).

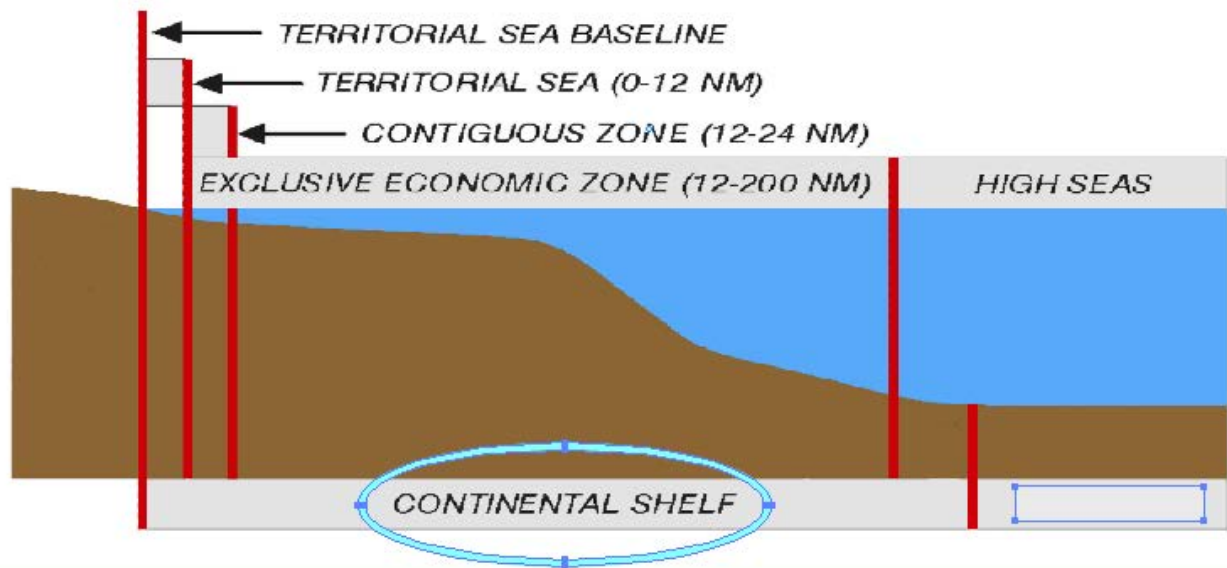
\*US **Department of State** leads this ECS Project, in partnership with **USGS** and **NOAA**.

**TASK: Establish the full extent of the US “Continental Shelf” beyond 200 nautical miles, consistent with international law.**

## PHYSIOGRAPHIC COMPONENTS:

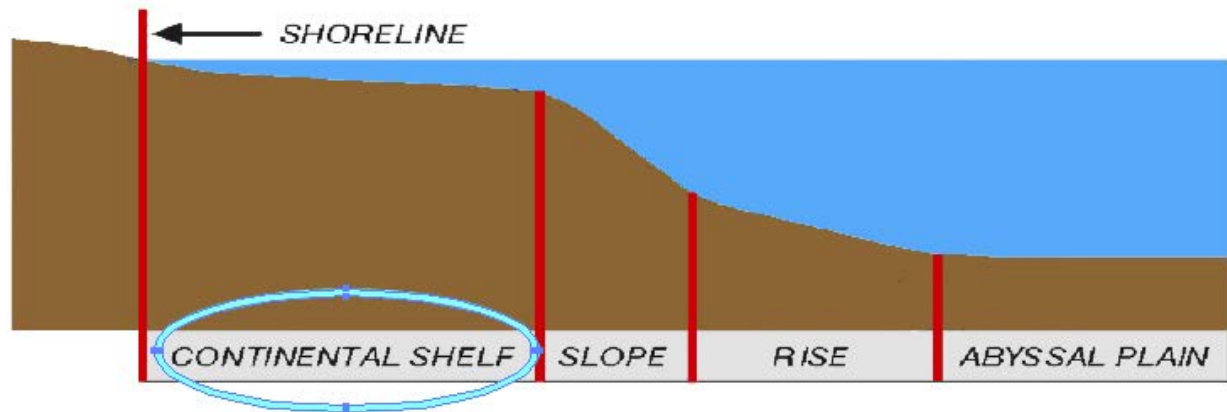


## JURIDICAL COMPONENTS:

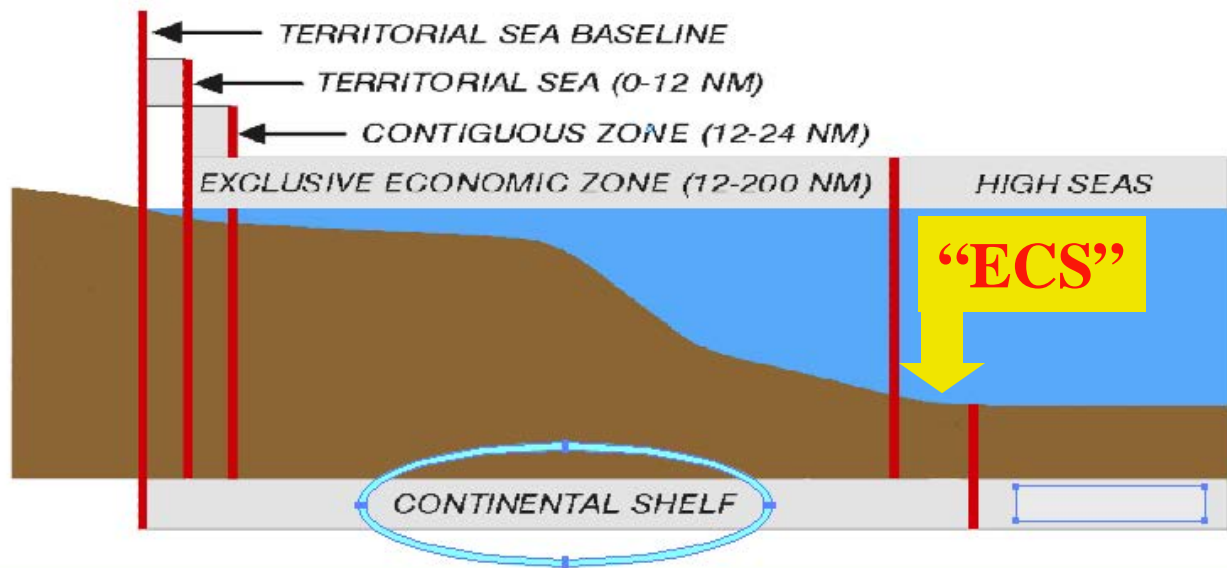


“Continental Shelf”:  
area of certain sovereign rights including  
resource and conservation rights to the seabed and subsoil.

## PHYSIOGRAPHIC COMPONENTS:



## JURIDICAL COMPONENTS:



“Continental Shelf”:  
area of certain sovereign rights including  
resource and conservation rights to the seabed and subsoil.

The logo features the text "U.S. Extended Continental Shelf Project" in a serif font. "U.S." is in a smaller size above "Extended". "Continental Shelf" is in a larger, bold font, and "Project" is in a smaller font below it. The text is flanked by two curved lines: a light blue line above and a dark blue line below, both curving from left to right.

*U.S.*  
*Extended Continental Shelf*  
*Project*

Establish the full extent of the US  
Continental Shelf  
Maritime Zone.

- An inherently governmental activity
- Data (new and rescued) intended to be fully available... UNH/CCOM, USGS – NAMSS, R2R and MarineGeoData, NGDC

## ECS Project:

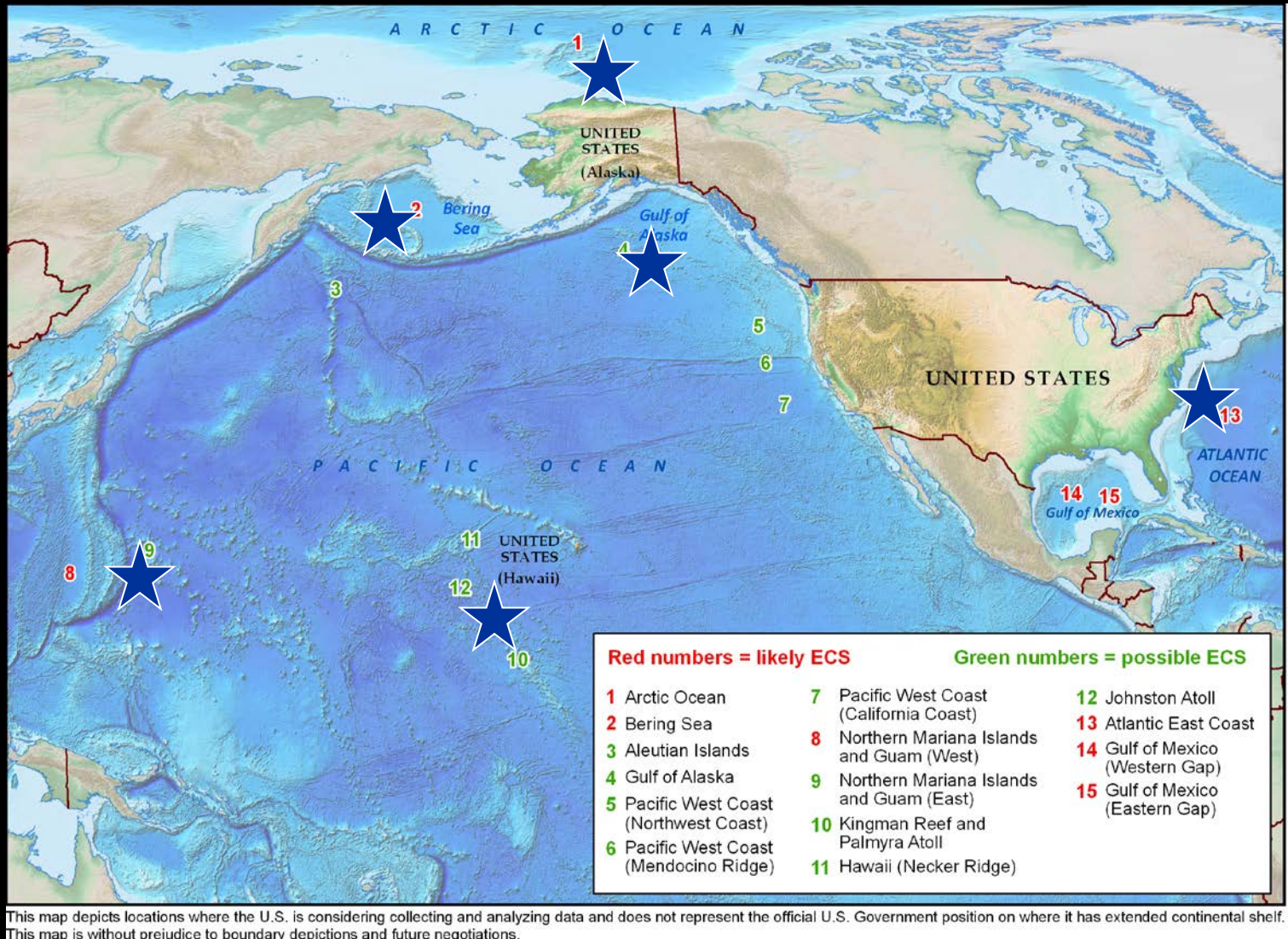
- \*morphology of the transition from margin to deep ocean floor
  - multibeam
- \*thickness of sediment beyond the “foot of the slope”
  - 2D seismic reflection imaging with velocity control

## USGS Mission:

- \*structures and processes that control the distribution of hazards and resources



# Stars identify areas requiring seismic data for ECS definition:



Regions of interest map ([continentalshelf.gov](http://continentalshelf.gov))

# Seismic Data Acquisition

Completed as of 2011 field season:

- \*Arctic
- \*Bering Sea
- \*Gulf of Alaska (probably)

Beginning **Planning** for:

**Atlantic** (2013/2014) – Langseth - 1 to 2 months

**Still dreaming** to add:

**Marianas/W Pacific** – piggyback w/ Lizarralde/Wiens?

**Line Islands** – Kingman Reef/Palmyra Atoll area



# Bathymetric Data Acquisition

Completed as of 2011 field season:

\*Bering Sea

Gulf of Mexico

N. Marianas/W. Mariana Ridge (probably)

Necker Ridge (probably)

Planning More for:

Atlantic (2012) – USN TAG60 w/ EM122 - 1 month

Arctic (2012?) – Healy – 1+ month

\*Gulf of Alaska (2013?) – Kilo Moana? – 1 month

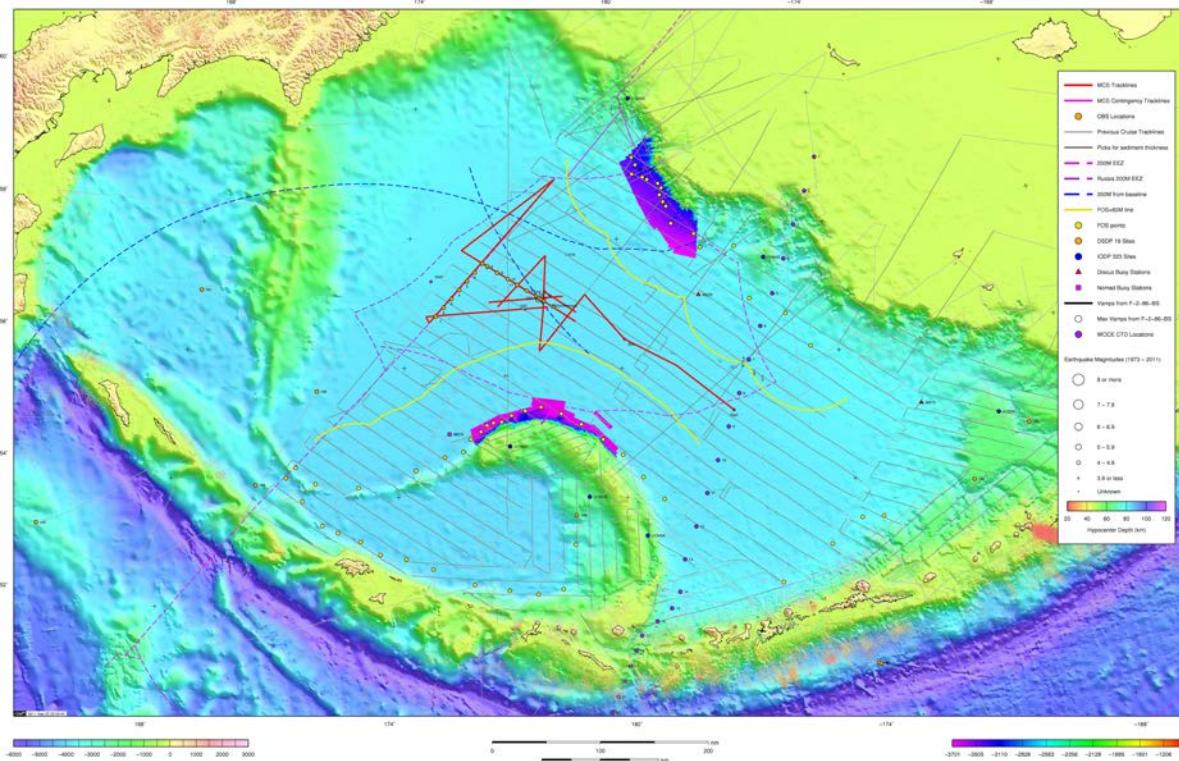
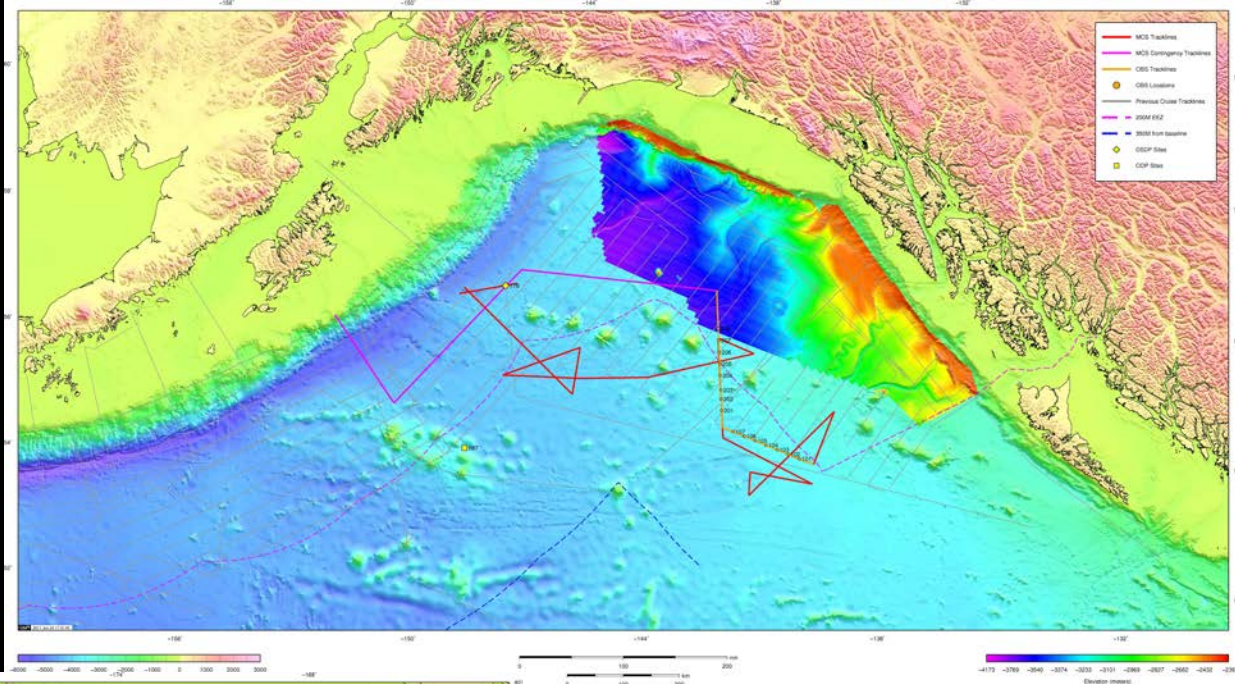
\*Stalemate Ridge (?) – USN TAG60 – 1 week

Mendocino Fracture Zone Ridge (?) – NOAA vessel – 2 weeks

Kingman Reef/Palmyra Atoll/Line Islands region – 2 months??

# Gulf of Alaska MGL1109

## 2D MCS&OBS Summer 2011



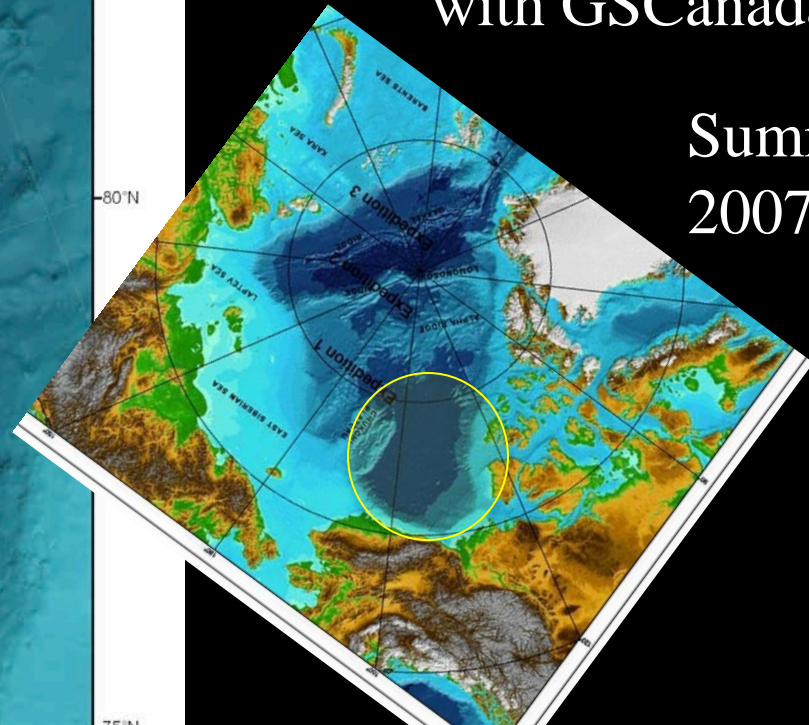
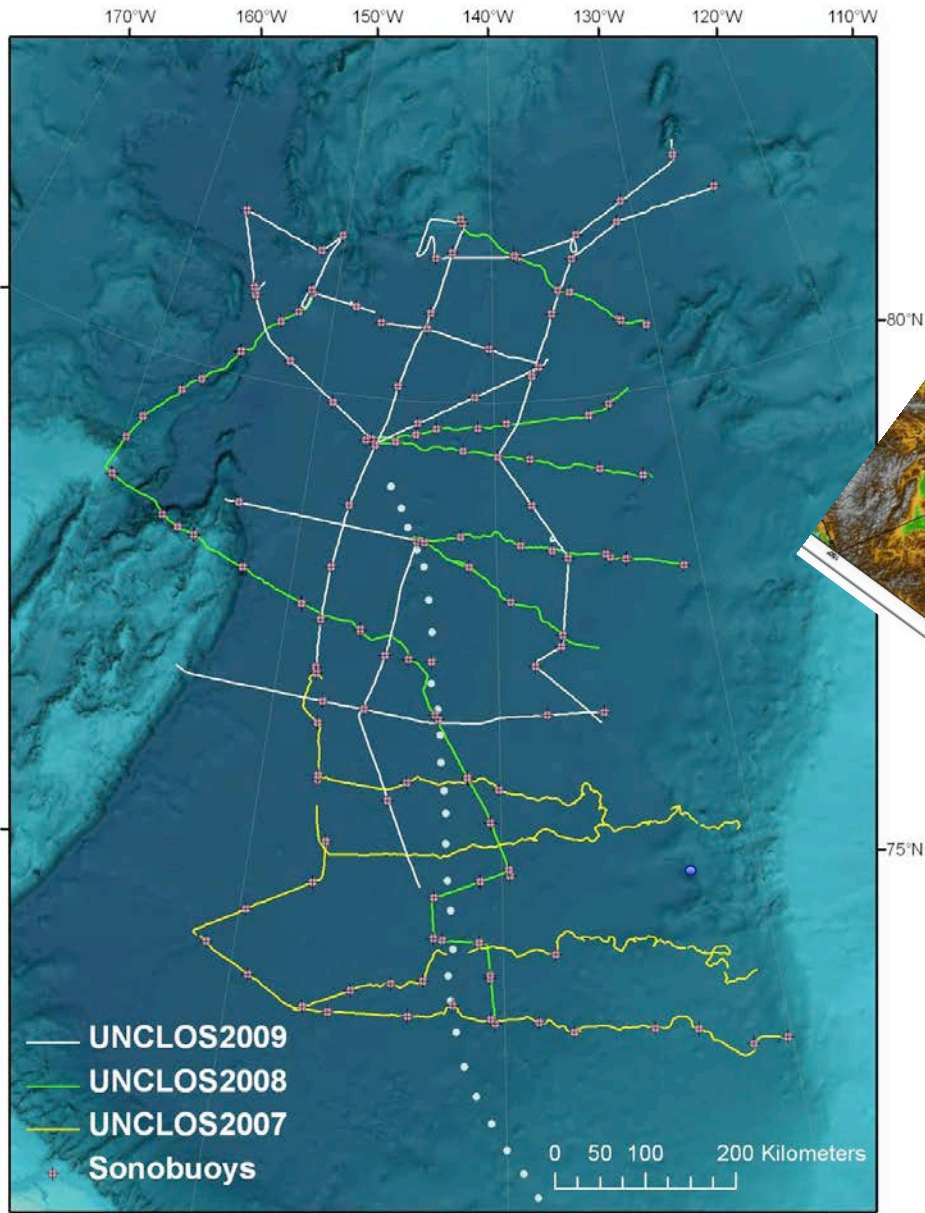
# MGL1111 Bering Sea

Garmon, V., and Wilson, L.A., 2005. U.S. Use of the Sea Cruise to Map the Foot of the Shelf and Slope in the Gulf of Alaska Continental Margin. Cruise Report, University of New Hampshire (UNH), Center for Coastal and Ocean Mapping (CCOM)/UNH Hydrographic Center (UHC), Durham, NH, 116. Report.

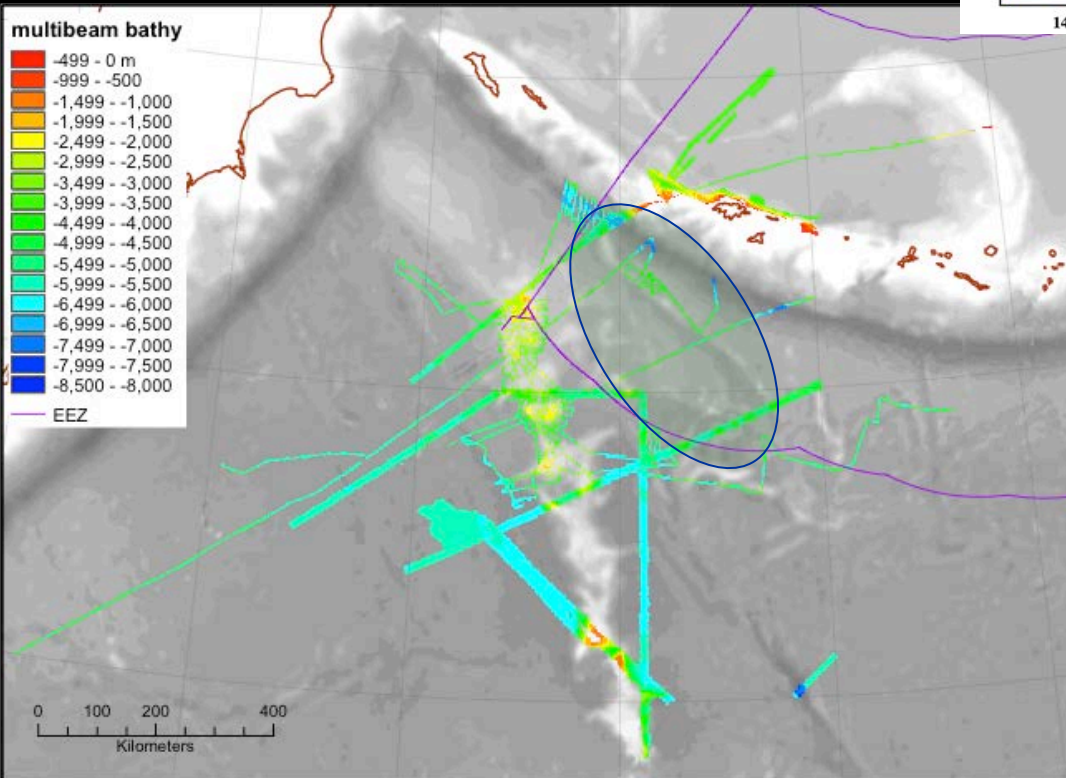
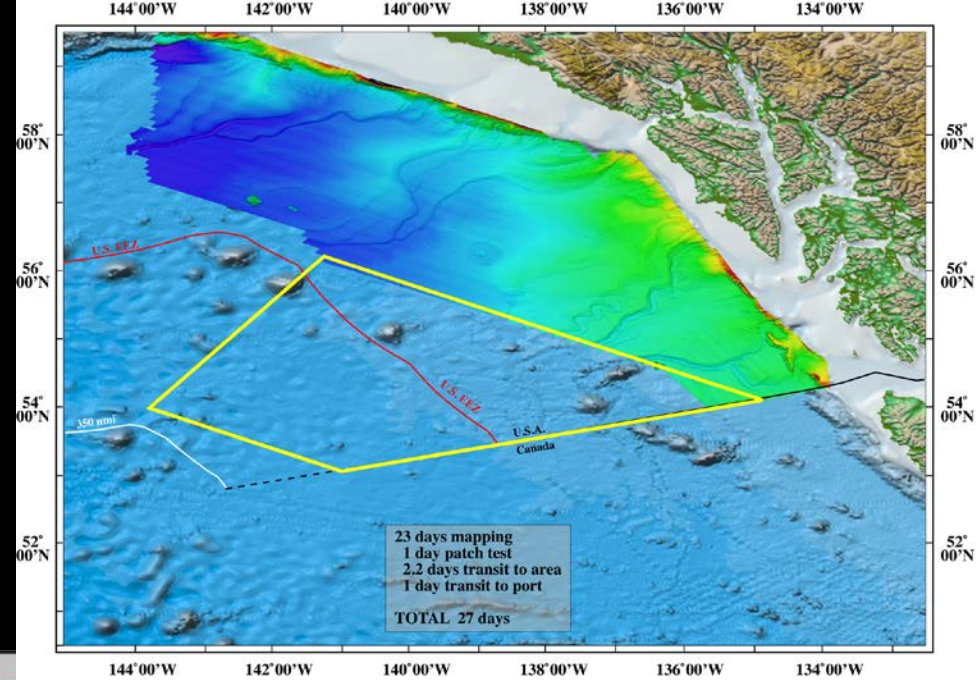


# Arctic 2-ship MCS with GSCanada

Summers  
2007-2011

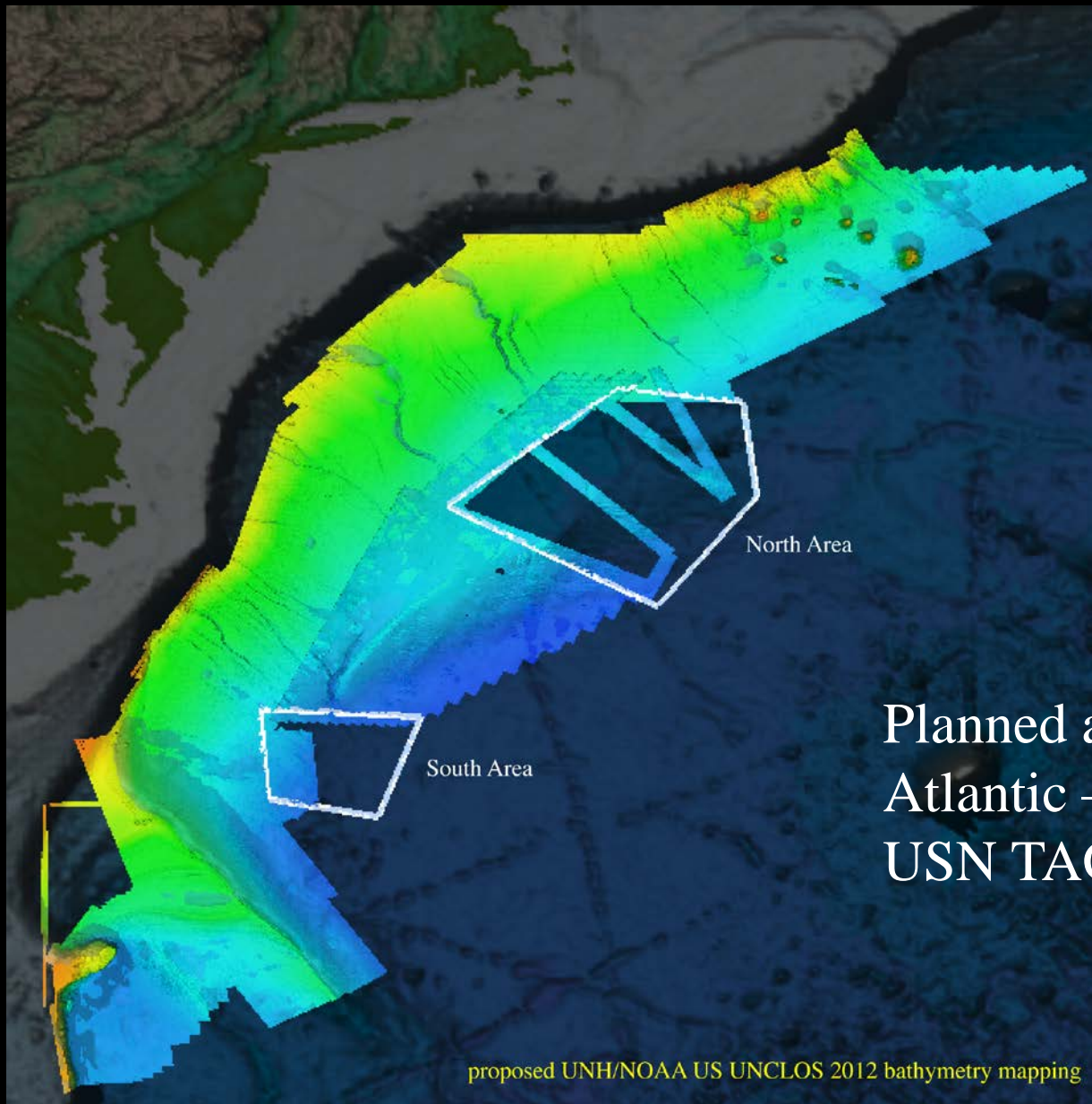


Planned additional multibeam:  
 Gulf of AK ~2013  
 Kilo Moana - ?



Planned additional multibeam:  
 Stalemate Ridge ~2013+  
 USN TAG60 - ?





Planned additional multibeam  
Atlantic – 2012  
USN TAG60 - ?

proposed UNH/NOAA US UNCLOS 2012 bathymetry mapping

*U.S.*  
*Extended Continental Shelf* **Project**

