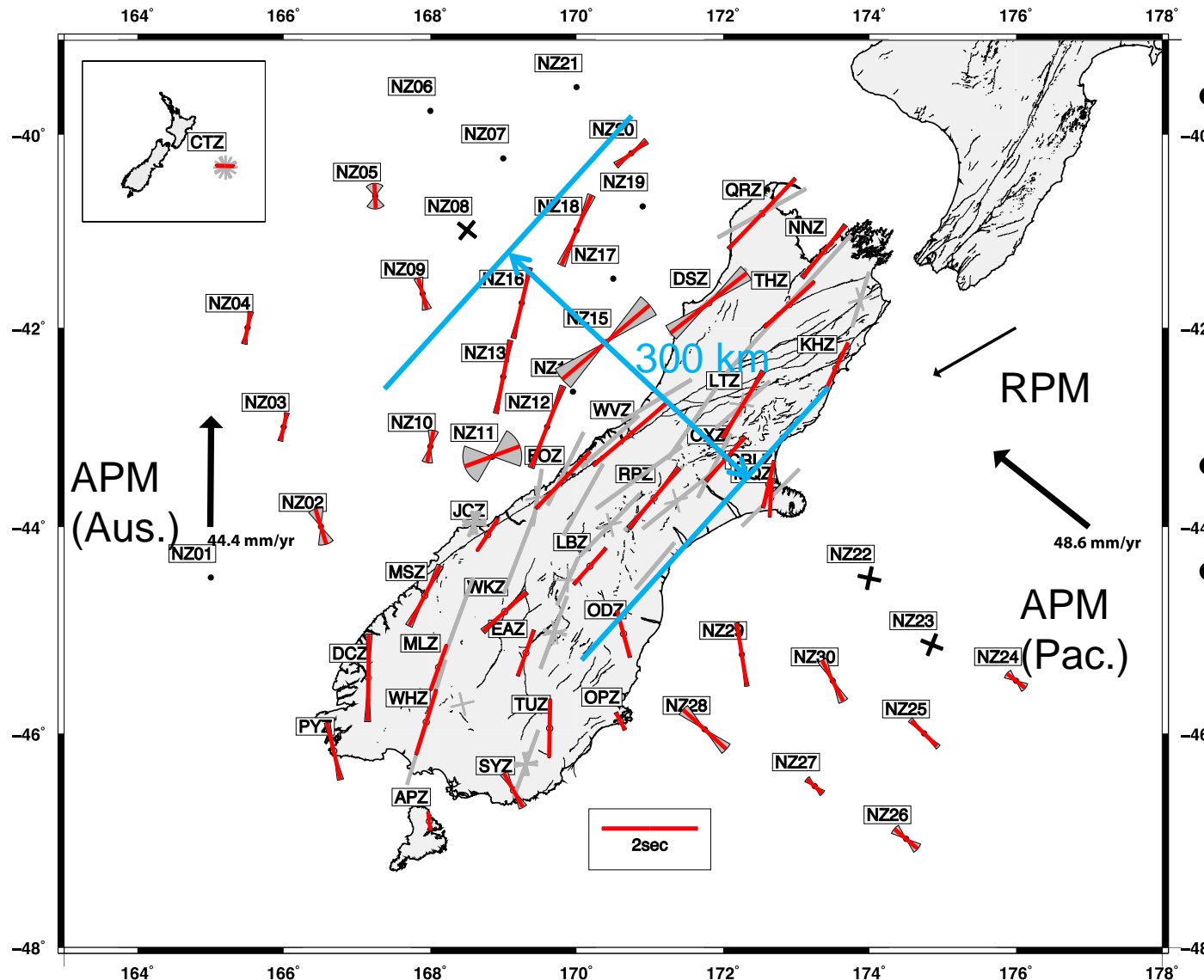


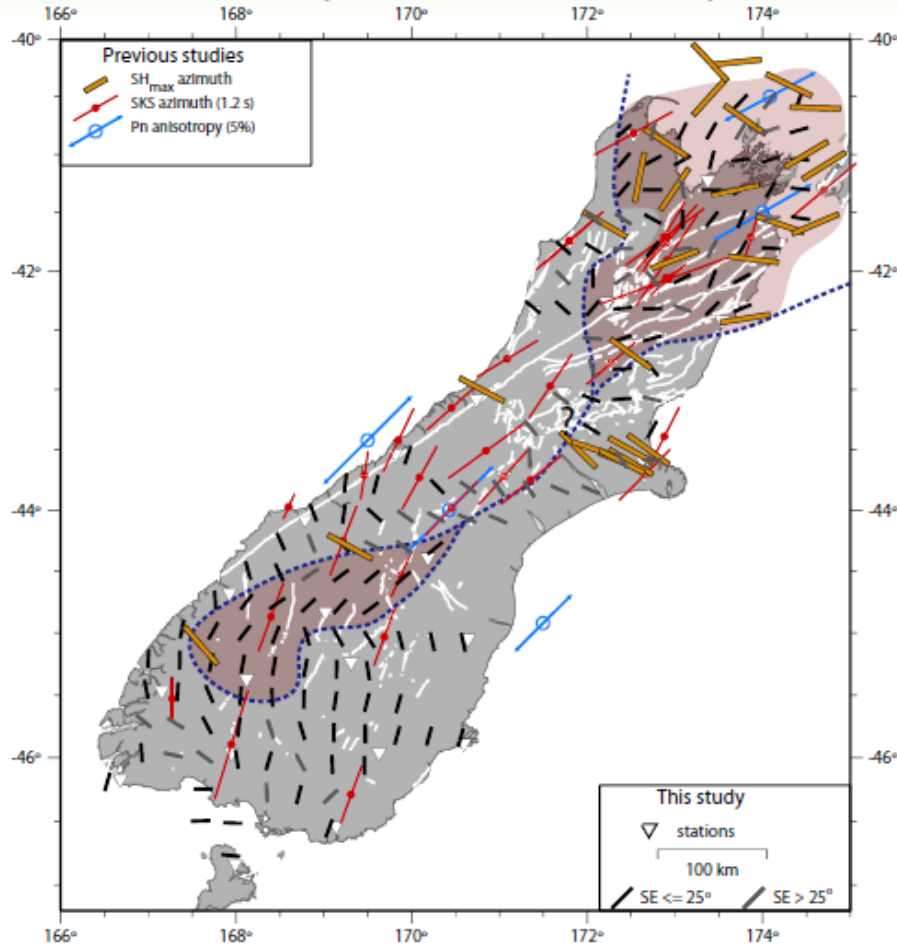
SKS including OBS-2014 picture



- Red=new with error bars as bow-ties
- Grey=old
- RPM-parallel region ~ 300 km wide

2-D Spatial Averages of ϕ from local/Regional S

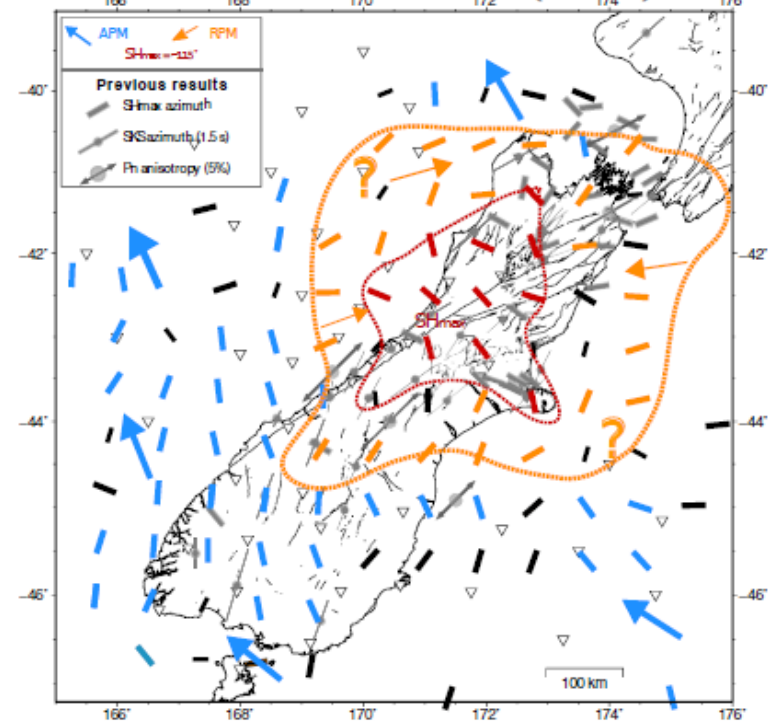
Land (depth ≤ 100 km)



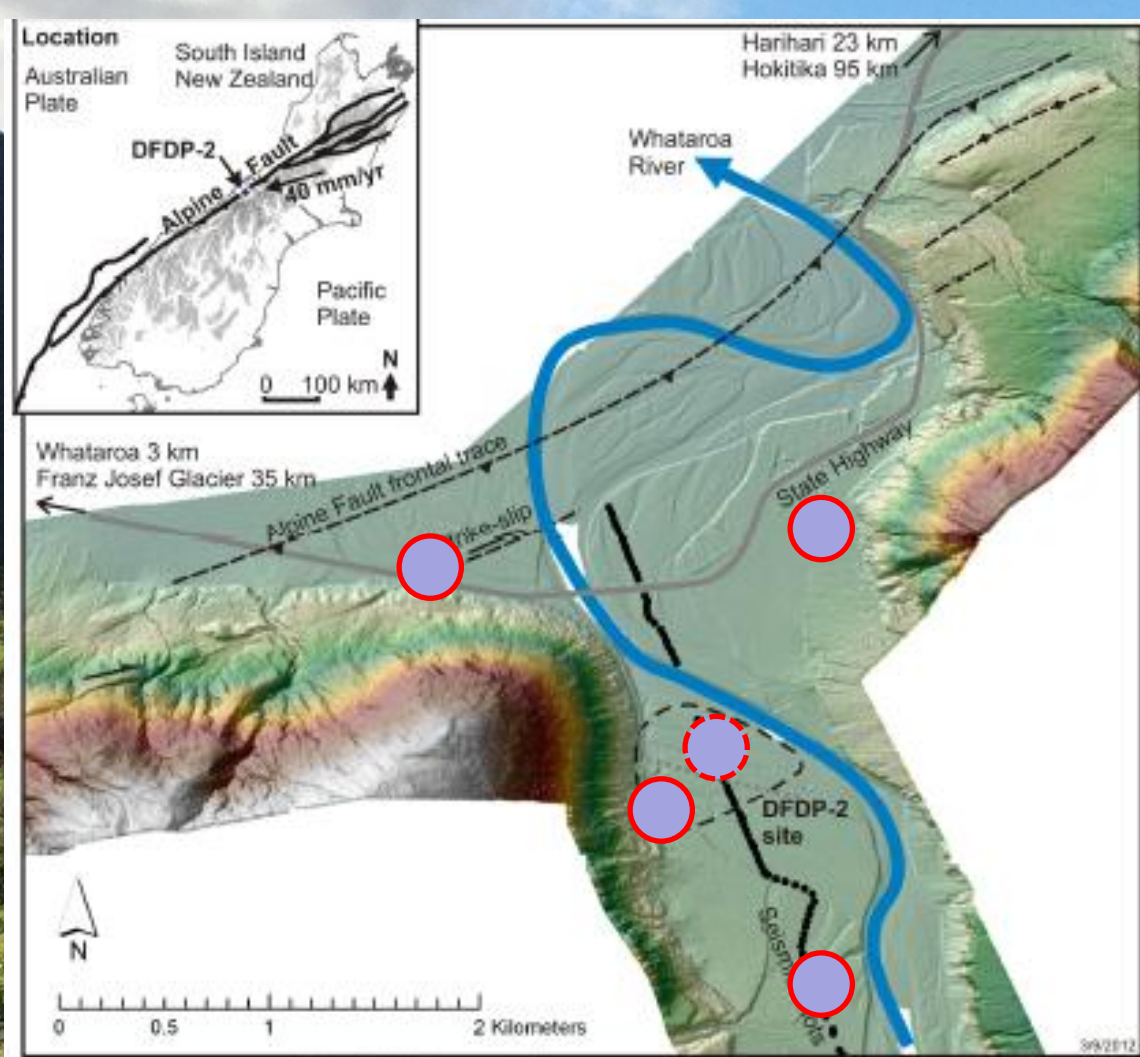
Karalliyadda and Savage [2013]

Shallow eqs (depth < 100 km)

Land + OBS (ALL)



- APM consistent ϕ — blue —
- RPM consistent ϕ — orange —
- SH_{max} consistent ϕ — red —



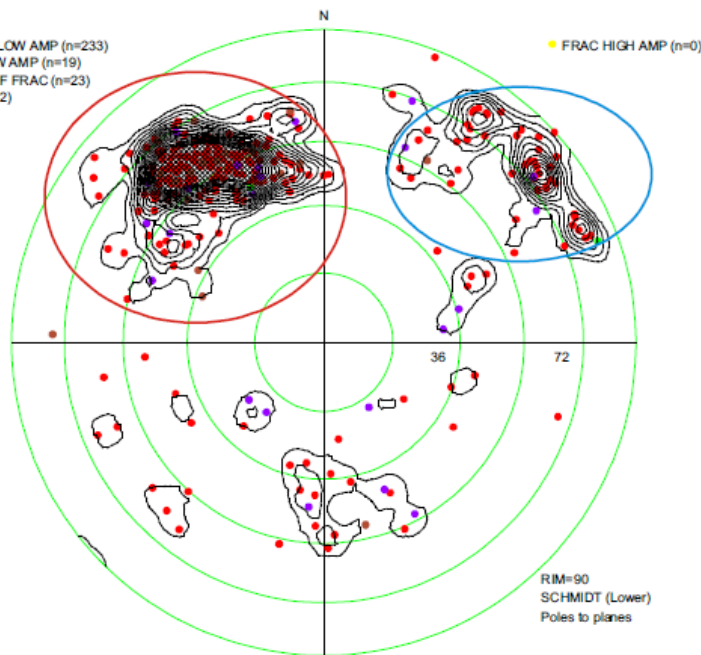
(plus nearby GeoNet
and SAMBA sites)

DFDP-2 monitoring

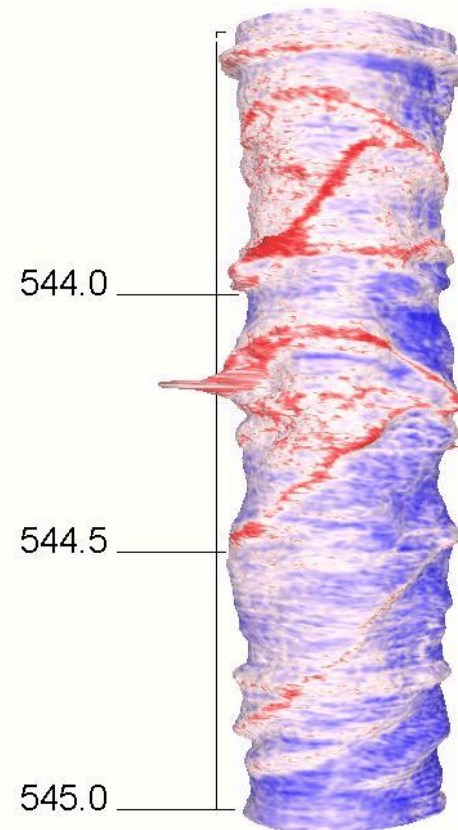
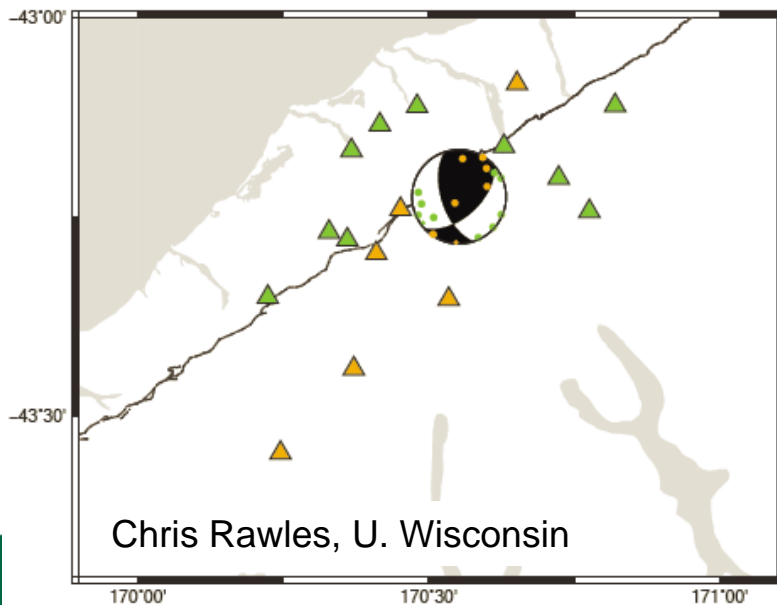


Borehole imagery reveals fractures and foliations on 0.1 –1 m scales with geometries similar to that of the SE-dipping Alpine Fault overall

Focal mechanisms with a similarly oriented nodal plane have also been obtained for earthquakes interpreted to be on the Alpine Fault



Cecile Massiot, VUW



Montpellier/CNRS
logging team

