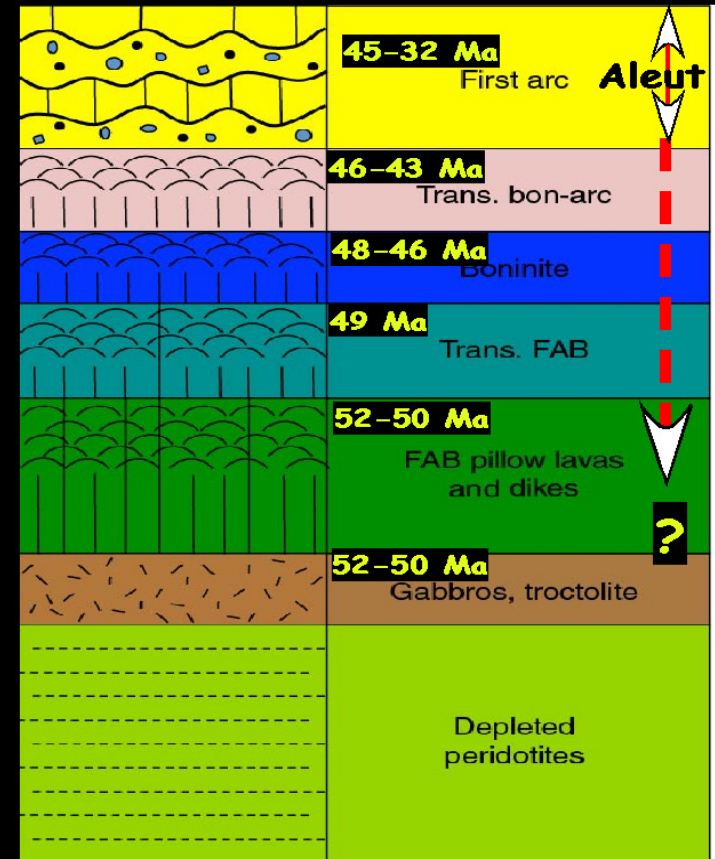
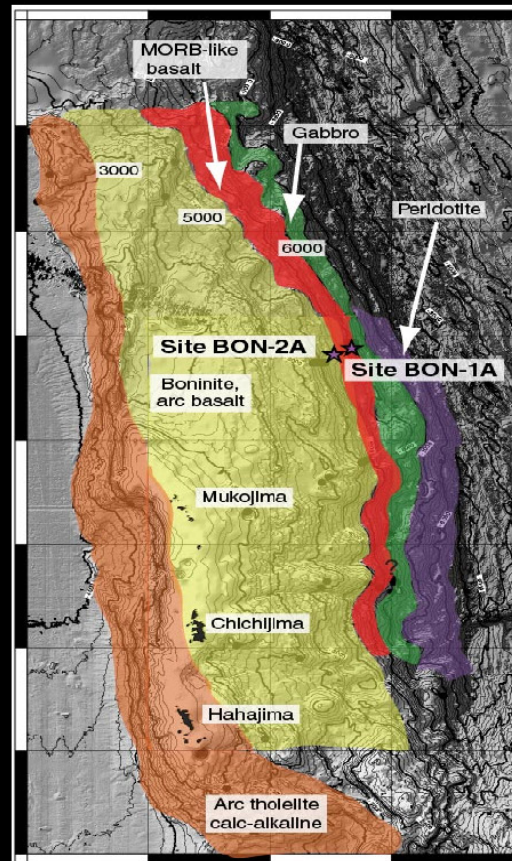
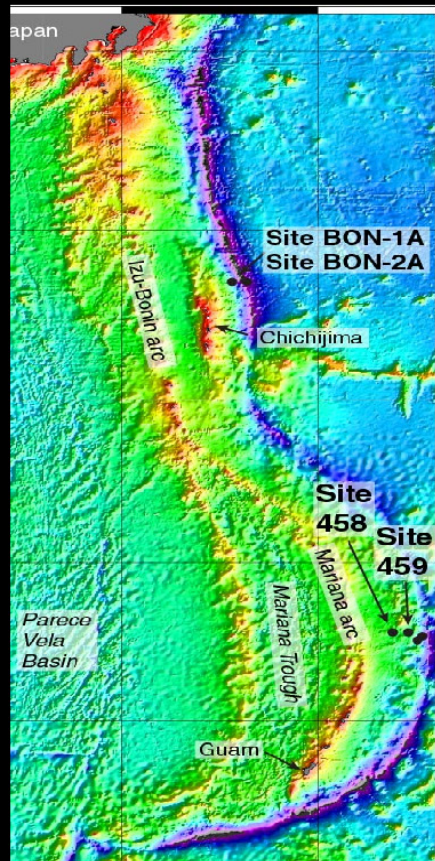
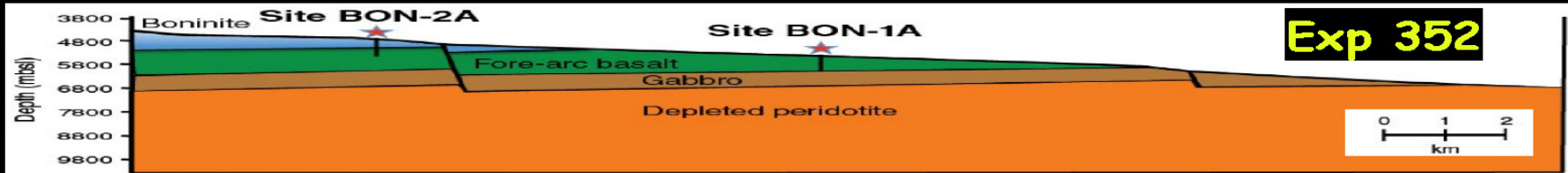
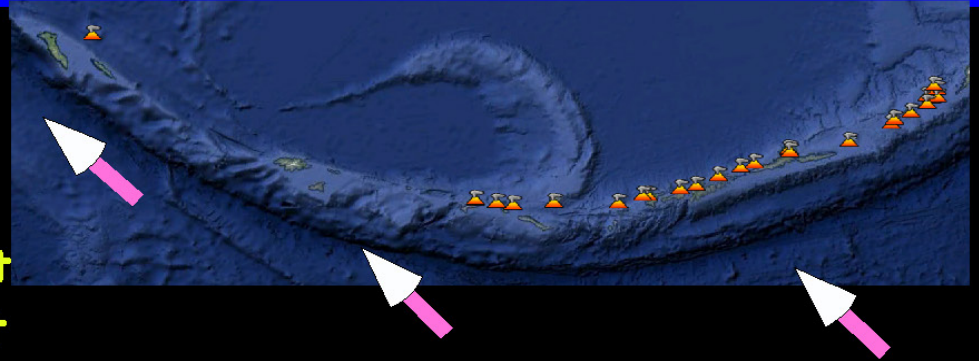


# Where to Go to Get Samples of the Initial or Birthing Phase of the Aleutian Subduction Zone and Its Arc Massif?



# Go West and In Deep Water:

- Less forearc truncation to west
- Less arc-summit volcanism to west
- Less trench sedimentation to west
- Increased arc disruption to west



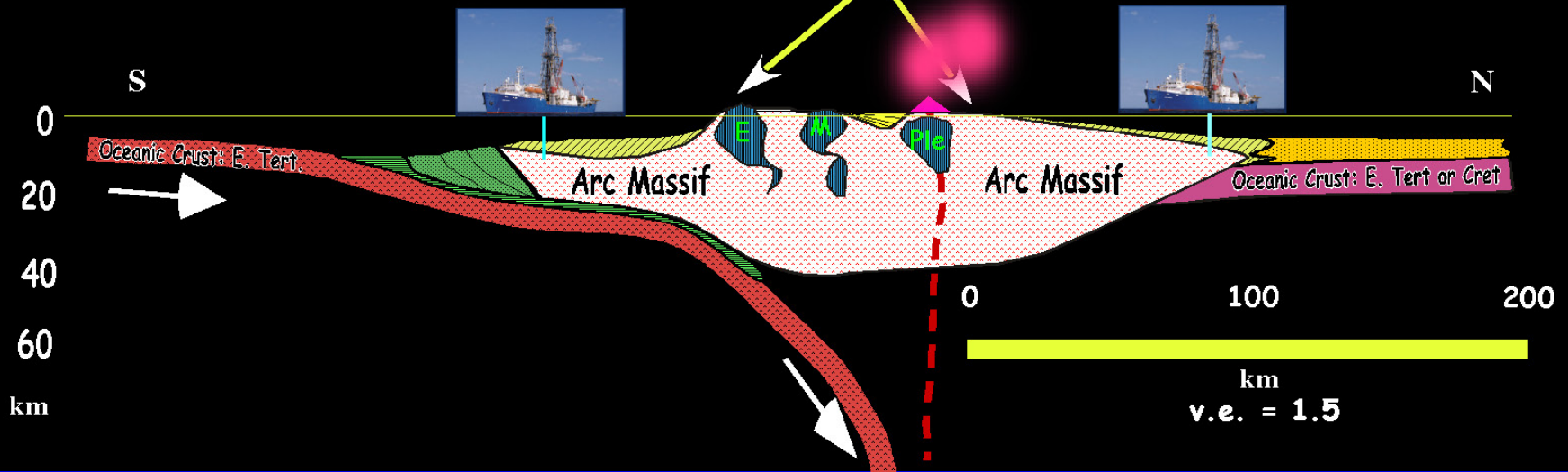
## FOREARC:

Early-formed basement exposed or covered by late Eocene and younger sedimentary section

**ARC SUMMIT:**  
Early-formed basement thickly topped by late Eocene and younger arc-volcanic units

## BACKARC:

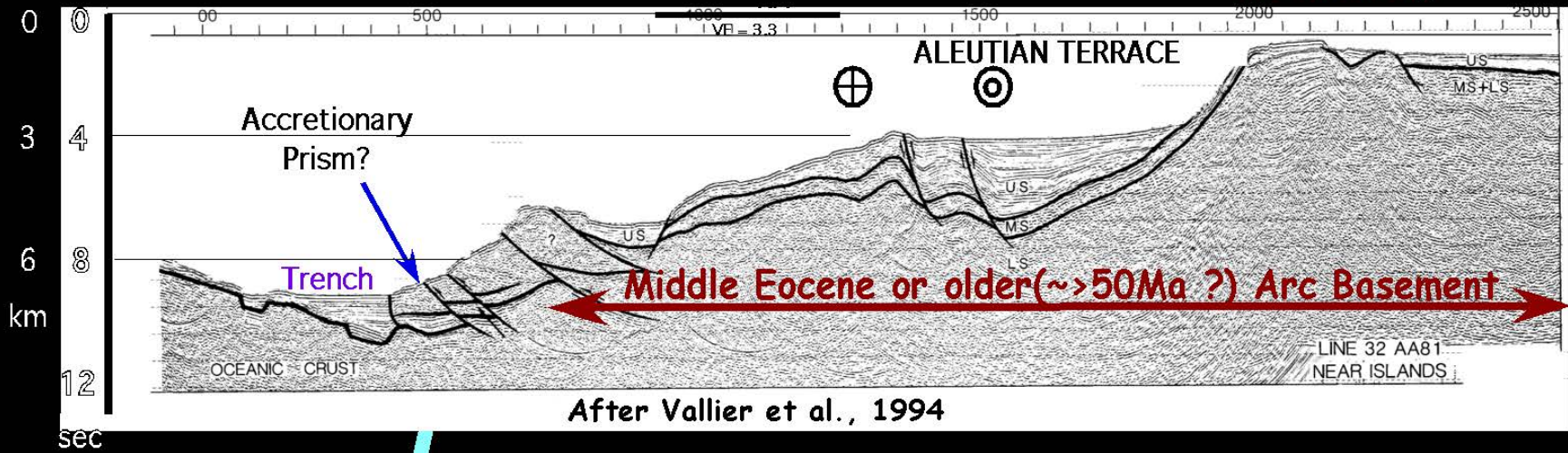
Early-formed basement exposed or covered by late Eocene and younger sedimentary section



# Example Area

Near Agattu Island  
(Mid-Upper Eoc  
arc basement)

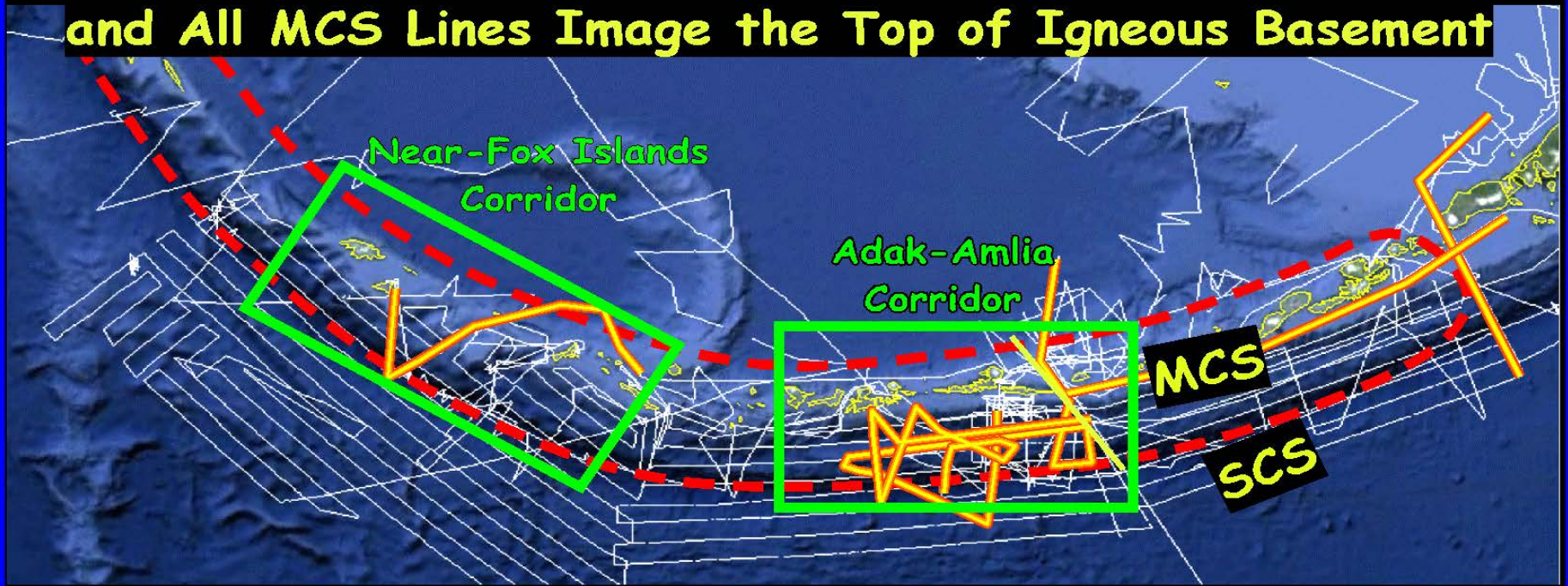
L-32





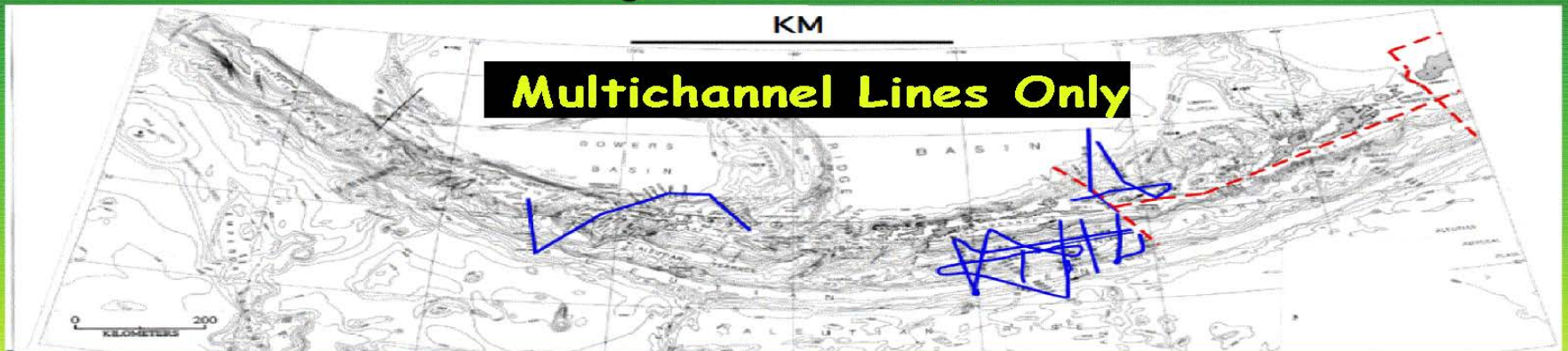


# Over the Aleutian Arc Massif Many Single-Channel and All MCS Lines Image the Top of Igneous Basement



0 500

## Multichannel Lines Only



MULTICHANNEL  
LINES

——— USGS (1980, 1981) R/V Lee  
- - - - - HOLBROOK ET AL (1994) R/V Ewing