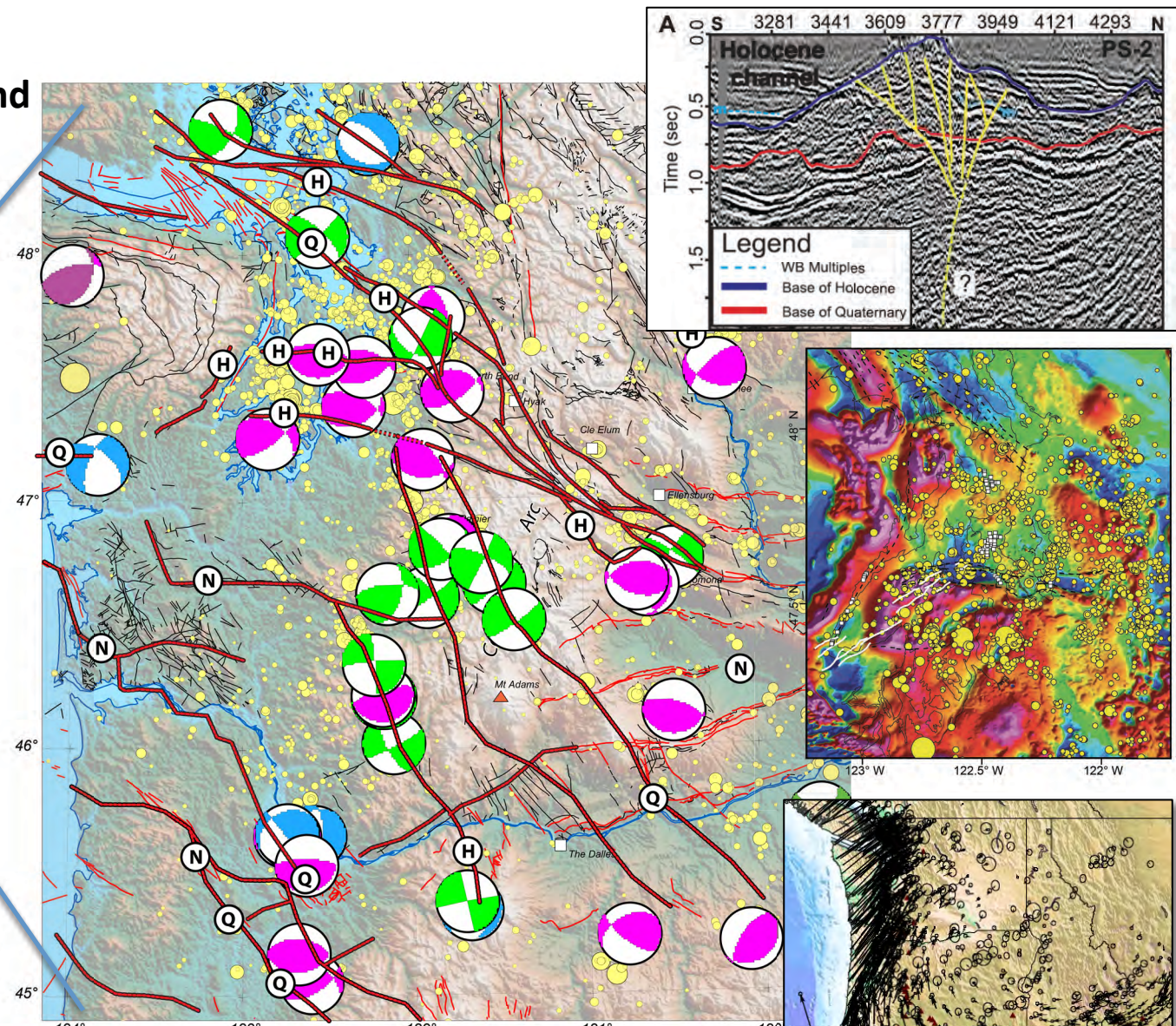
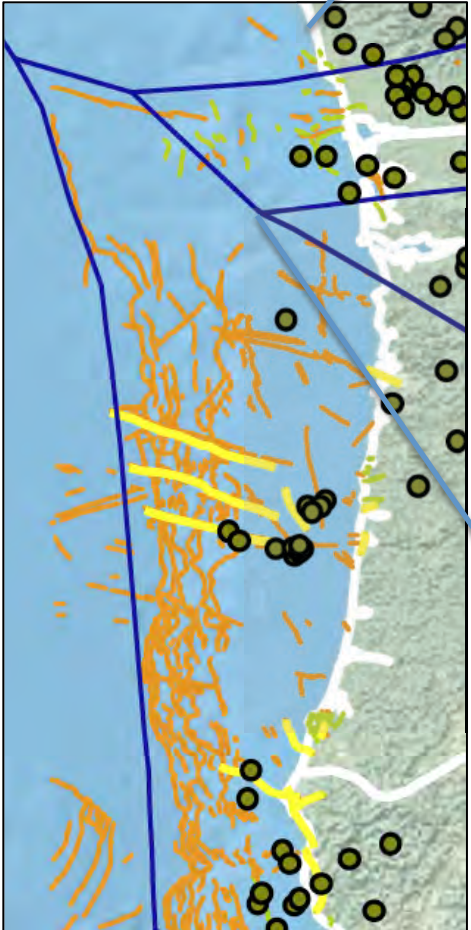


Forearc faults =
 Increasing dextral shear and
 N-S shortening to West
 Links to offshore?
 Segmentation?
 Accommodation of shear?



(H) "Holocene" (post glacial) (Q) "Quaternary" (mostly late Pleist, some as old as 1 Ma)

Goldfinger et al, 1997; Blakely et al, 2011, McCaffrey et al., 2007; Keranen, Wells, unpub.